



# P A R A D I S E

## T A V E U N I - F I J I

### Dive Information

(last updated Jan 2014)

If you are a diver and you are looking for the best soft coral diving in the world, then **Paradise Taveuni** is your destination. Not only does Taveuni offer more dive sites than anywhere in the Pacific, but it is also home to one of the top 5 soft coral dive sites in the world - the **Legendary White Wall site on Rainbow Reef**.

The Somosomo Strait (Fijian for 'good water') has strong tidal currents, which provide a constant flow of nutrients, idyllic for soft coral growth and diverse fish life.

Taveuni is world renowned among divers worldwide as being '**the soft coral capital of the world.**'

**Paradise Taveuni** is the only resort on the island offering diving on the southern reef of Taveuni, Vuna Reef as well as the legendary Rainbow Reef. Plus **Paradise Taveuni** boasts incredible shore diving directly from the private marina. With over 40 dive sites on offer, you won't visit the same site twice, unless you want to. With our owner operated Pro Dive Taveuni shop on site, you will find full service from our friendly Pro Dive Team.

Every day, divers from all over the world, choose **Paradise Taveuni**, to experience the extraordinary formations of hard and soft corals and an abundance of fish life including anemone fish, maori wrasse, lionfish, reef sharks, rays, turtles and much, much more. With a variety of deep wall drop off's and shallow drift dives, there is something here for every diver.

#### What type of diving can I expect in Paradise Taveuni?

If you love underwater fauna, Taveuni is indeed paradise and you will experience some of the best warm water diving in the world with incredible visibility of up to 100 meters all year round. You will experience schools of barracudas, beautiful trevallies, manta shrimps, lion fish, manta rays, turtles, blue ribbon eel, and off course the always magnificent, reef sharks.



## What types of divers usually dive in Paradise?

Divers who are looking for a unique diving opportunity allowing them to experience some of the most exceptional dives sites in the world. Here in **Paradise**, we believe diving is more than an activity, it is a way of life. Allan Gortan and his team of local PADI DI's and DM's, guides and crew are diving fanatics, they live and breath diving... and each day they look forward to sharing their passion for their underwater world with our Guests.

## How many boats do you have in Paradise?

Paradise has a fleet of 3 custom made dive boats certified by the Fiji Island Maritime Association and equipped with emergency supplies, first aid, oxygen and VHF.

- All boats are custom made and all have regularly serviced outboard engines.
- All boats have small swim platforms and ladders. Typically our divers do a backward roll to enter the water.
- Entry back into the boat is by ladder with assistance by our dive crew, if required.
- All boats have a canopy to ensure shelter from the tropical weather.
- We carry oxygen on board each boat and have it on hand at the Pro Dive shop on site.

## Our custom made dive boats are:

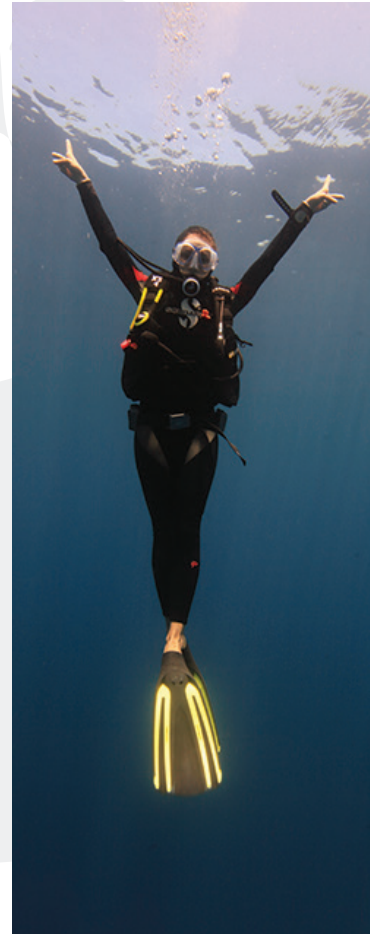
•Our custom made 10 metre dive boat, '**Paradise Princess**', is made of wood and fibreglass with a full length canopy, powered by twin 60HP Yamaha engines and has a ladder for ease of exit and entry. Paradise Princess takes 12 divers + crew.

•Our custom made 12 metre dive boat, '**Lady Paradise**', is made of aluminium with a full length canopy, powered by twin 115HP Yamaha engines and has a ladder for ease of exit and entry. Lady Paradise takes 22 divers + crew.

•Our custom made 8 metre dive boat, '**Adi Vuki**', is made of aluminium and powered by a 115HP Yamaha engine and has a ladder for ease of exit and entry. Adi Vuki takes 4 divers + crew and is perfect for private diving.

## What services does your Dive Shop offer me?

Here in **Paradise**, we believe in quality diving and that's why we offer a unique type of diving we like to call: **Luxury Diving**.



**Luxury Diving** ensures you enjoy every single moment of your dive. There is no rush in **Paradise**. Our Pro Dive Team takes the time to get know you, to talk to you and understand your passions and your objectives for each dive. We believe that each dive is unique and that each of our dive sites has the opportunity to give you one of the best dives of your life. We work hard to help you experience something extraordinary.

With a full selection of gear available, our on-site dive shop supplies Oceanic dive gear with a variety of sizes for all divers. Regularly cleaned and serviced, **Paradise Taveuni** carries both 3mm and 5mm full length wet suits. You will find a full range of sizes of BCDs and regulators with computers. We have both booties and open backed fins or full foot fins to choose from. If you are travelling with your own gear we also offer a tanks and weights package price.

All of our insured Dive Instructors, Masters and licensed Boat Captains have lived in, on and around these waters their entire lives and the local knowledge and experience cannot be matched. They are eager to share their beloved island with you both above and below the water.

There is a shower on our Private Marina and a rinse tank at the Pro Dive Taveuni shop.

Our Pro Dive Shop also offers Log books, dive gear, Dive T-shirts, caps and underwater camera rental.

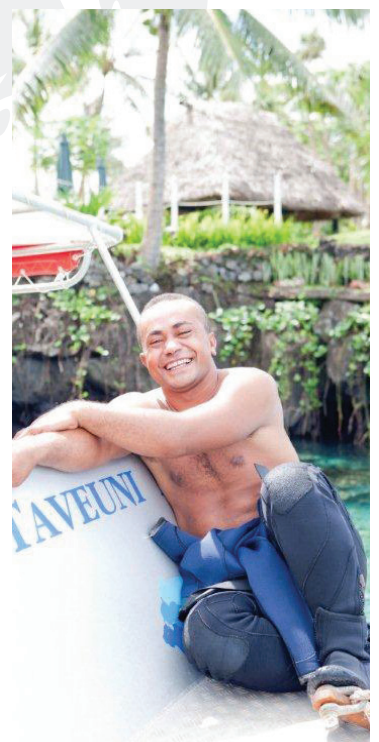
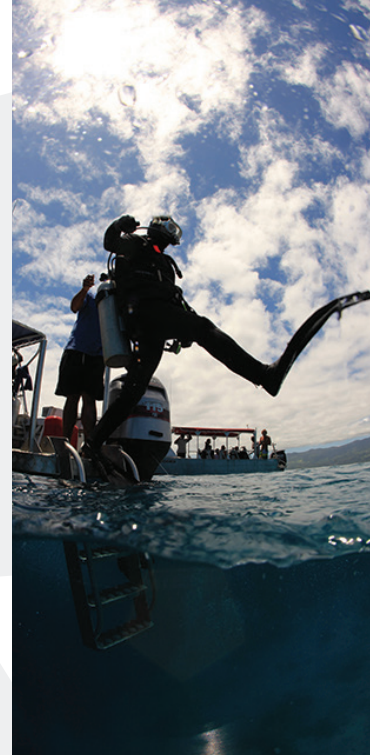
### **Quick Facts about Paradise Taveuni as a Diving Destination**

- Paradise Taveuni** offers the largest number of dive sites in Fiji, offering over **40 different dive sites** on both Vuna Reef and Rainbow Reef and we are discovering more all the time. You won't dive the same site twice – unless you want to.

- Rainbow Reef has been considered “**the best soft coral reef in the Pacific**” by one of the most experienced divers of all times - **Jacques Cousteau**.

- Taveuni is the only destination in Fiji that offers all types of diving. From deep, shallow, drift and beginners dive sites. **Paradise is perfect for any type of diving certification and experience level.**

- Our PADI Dive Team only work with small groups providing dedicated and exclusive diving to our Guests. We are not another “diving factory!”



•**Paradise Taveuni** offers spectacular shore dives and you are guaranteed to see resident moray eels, blue ribbon eels, lion fish, anemone fish, soft corals and a multitude of other tropical reef fish on any shore dive. Shore dives are FREE in Paradise when you take a dive package.

### Dives Sites

From beginner divers, to professional videographers, each dive site in **Paradise Taveuni** offers a complete range of marine life, depth and colours.

For your convenience, we have classified our dive sites into levels of experience.

**Level 1:** Beginner diver. Maximum depth 18 metres, gentle with no current

**Level 2:** Intermediate diver, depths range from 20-25 metres, some current, some surface waves at times.

**Level 3:** Advanced diver, depths up to 30 metres, expect current and exposed surface conditions at times.

#### **Paradise Reef (house reef) Level 1**

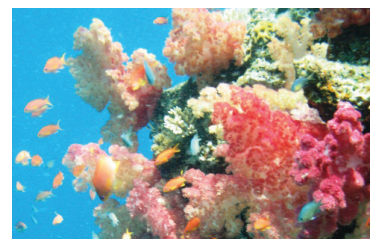
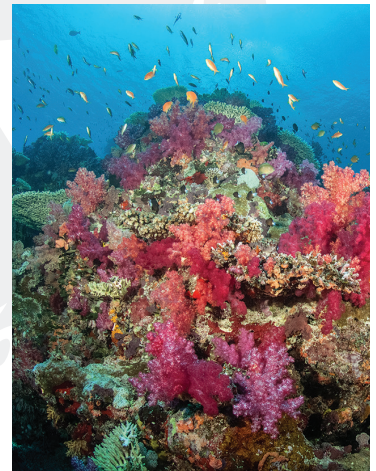
This is the reef located right in front of Paradise. In one direction, it is a labyrinth of lava flow covered in stunning hard and soft corals, swarming in tropical reef species, shallow and bright – a photographers dream! In the other is a fantastic training site with a variety of terrain to make the most of your learning experience. We utilise this site for our night diving and you can snorkel it any time during your stay. All our local species are represented here and the colours are stunning.

#### **Dolphin Bay Level 1**

Located just a bay over, this drift dive is on the island wall. Resident Eels and lionfish make this a popular dive. Large fish like snapper and trevally make regular appearances adding spectacle to one of our favourite sites.

#### **Coral Gardens Level 1**

Nicknamed Nirvana and only a few minutes by boat from the Resort, this is one of our best dive sites. Three fingers of lava once streamed into the ocean and are now covered with a variety of hard and soft coral species. Rays, sharks and big schools of barracuda are the keepers of the Coral Garden. Schools of trevally, snappers and tunas abound. It's an overdose of everything!



### **Steve's Corner *Level 1***

This dive site reveals a huge variety of soft corals feeding in the current. Turn the corner and come up shallow to enjoy a large archway swim-through guarded by the resident anemone fish and filled with Ghost Coral. Sharp-eyed divers will also spot the juvenile blue ribbon eels here.

### **Tomasi's Delight *Level 1***

This dive site is situated close to Paradise. A steep slope of hard corals hides many small treasures – dwarf lionfish, cowries and nudibranchs have all made their homes here, as well as an array of featherstars and sea cucumbers.

### **Orgasm (Vuna Reef) *Level 2***

Vuna Reef at its finest! This wall dive faces open ocean and it is here that we have seen some of our favourite regulars: sharks, rays and napoleon wrasse. Drift by schools of spanish mackerel or giant tuna from the deep. All this in only 60f /18m, a truly awe-inspiring dive site that never seems to disappoint us.

### **Tavoro Cave (Vuna Reef) *Level 3***

This deep wall dive has got it all. A spooky cave at 90f/27m, swim - throughs, and lots of life. The topography of this site is striking: a sheer wall with plenty of gullies. Look up into clouds of reef fish, look down to reef sharks, and look out to barracuda, tuna and turtles. A dive not easily forgotten!

### **Yellow Fin Wall (Vuna Reef) *Level 2***

Drift along this section of Vuna Reef and enjoy a fabulous vista of soft corals. Keep a watch in the blue for the namesakes of this site – large yellow fin tuna that speed gracefully past in the company of other pelagic fish and turtles.

### **Cabbage Patch (Vuna Reef) *Level 1***

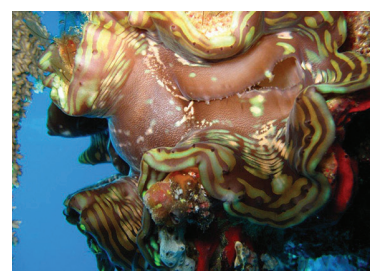
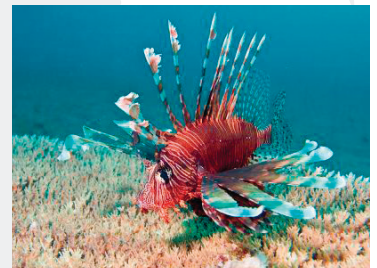
Sheltered within Vuna Lagoon, dive down to an almost lunar landscape. A shallow dive perfect for novices, cruise around the huge cabbage-like corals that sit on brilliant white sand and marvel at the marine life that finds a home amongst them.

### **Incredible Reef (Vuna Reef) *Level 3***

On the inner side of Vuna Reef, this deep dive explores a large wedge-shaped area cutting into the Reef wall. Schools of pelagics glide past as smaller reef fish swarm in the shelter of the wedge. This site certainly lives up to its name!

### **Pinnacles (Vuna Reef) *Level 3***

This deep seamount stands a little off Vuna Reef and attracts Manta Rays in season and other large visitors as well as smaller schooling species. Soft corals are abundant and bright thanks to the sea current passing by.



### **The Stairs (Vuna Reef) Level 2**

On the top of the reef, you are greeted by hard plate corals of all colours, and clouds of fish, including titan trigger fish, parrot fish and wrasse. From here, dive down through a swim through covered in soft corals and out onto an inverted wall swathed in pure white soft coral. Back up the stairway, under the arches enveloped in white and purple soft corals. All types of reef sharks and barracuda often visit this site. A favourite amongst our Dive Team!



### **Fish Factory (Vuna Reef) Level 2**

Stunning hard plate corals, lots of ambient light, multicoloured patches of soft coral, giant clams and swarms of reef fish at a depth of less than 60f/18m make this a popular site for photographers, beginners and experienced divers.



### **Purple Wall (Rainbow Reef site) Level 3**

This is one of the truly stunning sites on the Rainbow Reef. It deserves its billing as one of the worlds top dive sites. A solid wall of purple soft coral and more species than can be counted. You will not want to leave!

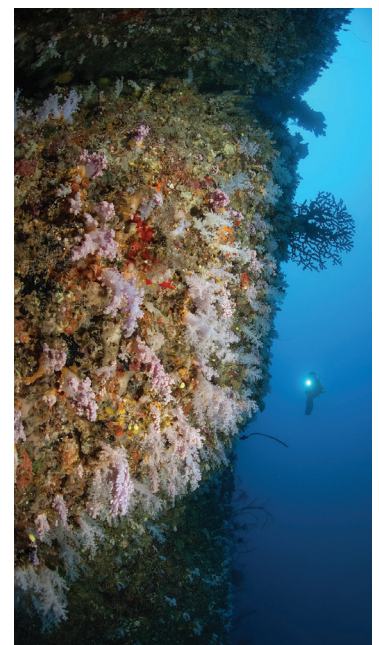


### **The Great White Wall (Rainbow Reef site) Level 3**

The soft coral capital of the world's signature dive offers an astounding wall of pure white soft coral. This site is definitely the world famous Rainbow Reef's top draw. A coral encrusted swim - through leads onto the wall from the reef top. A dazzling myriad of colour and life inhabits the reef top. Manta rays glide past with ethereal grace. On exiting the water from this site an awed silence lasts for a while before an excited chatter that lasts for days starts among divers. Not to be missed!

### **Jack's Place (Rainbow Reef site) Level 2**

Situated on the Rainbow Reef, this dive site offers an immense coral bommie covered with vibrant colours of soft coral and fish. The site is a haven for spanish dancers, box fish and white tipped reef sharks.



### **Rainbow Passage (Rainbow Reef site) Level 2**

In terms of fish life and soft corals, the sheer abundance on this Rainbow Reef site is incredible. The top of the reef starts at 40ft/12m and gradually slopes to 70ft/21m. Covered by some very unique soft corals not found in similar form or in this abundance anywhere else in Fiji. Well, the name speaks for itself!

### **Annie's Bombie (Rainbow reef) Level 2**

A submerged reef with many big coral bommies including the large 'Annie's Bombie'. Weave through the coral and enjoy the schools of fusillias, bandits and anthias and the occasional leopard shark.

### **The Zoo (Rainbow Reef) *Level 3***

An extreme marine experience! Schools of barracuda are common here, swimming above the white tip reef sharks resting on the sand. Moral eels, groupers and small reef fish are plentiful and lucky divers will glimpse the graceful bronze whaler sharks patrolling the deep blue waters.

### **Nuku Reef (Rainbow Reef) *Level 2***

Drift dive along this gently sloping reef and marvel at the small critters that reside here – Christmas tree worms, clams and sea anemones are all in abundance, along with their resident clown fish and trigger fish.

### **Fish Factory (Rainbow Reef) *Level 2***

Dive along this steep wall and meet many fish feeding in the current – parrot fish, spanish mackerel and angle fish are all resident here. The sharp-eyed can also spot stone fish and leaf scorpion fish hiding in the wall crevices.

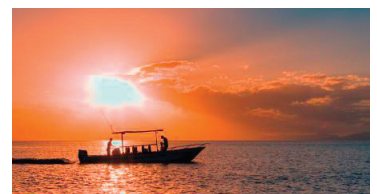
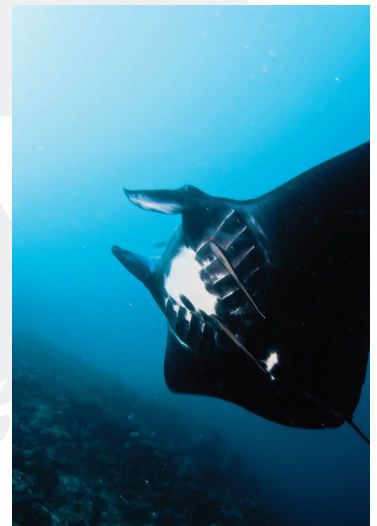
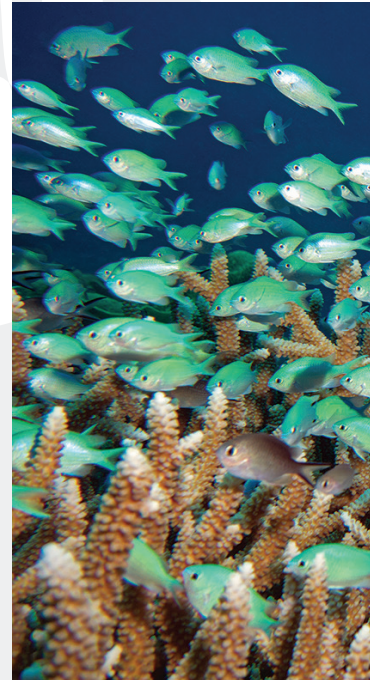
### **Rainbows End (Rainbow Reef) *Level 3***

Soft coral heaven! Beautiful purple, yellow and red soft corals make sure Rainbow's End lives up to it's name. Add in lionfish, Moorish Idols and hundreds of anthias and this is a true explosion of colour.

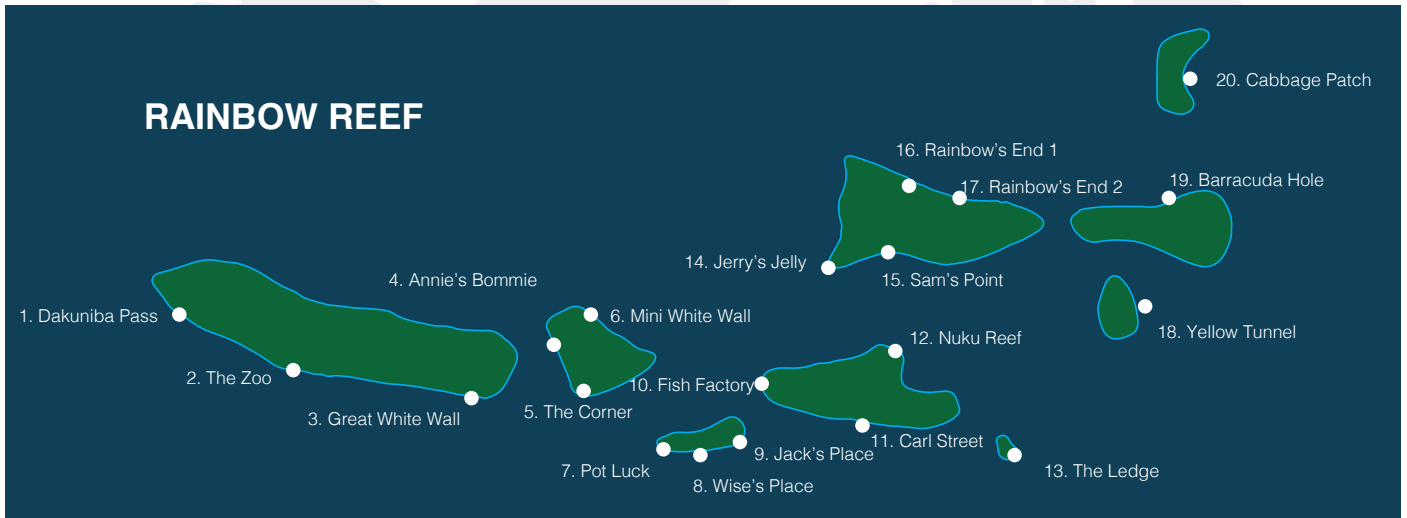
**Our on-site Dive Shop displays information on tides, conditions and dives chosen for today and the next, to ensure your diving is planned and you don't miss out on a minute of the underwater action.**

**Please don't hesitate to suggest a dive site to visit. Our Dive Team will happy to oblige if conditions are right.**

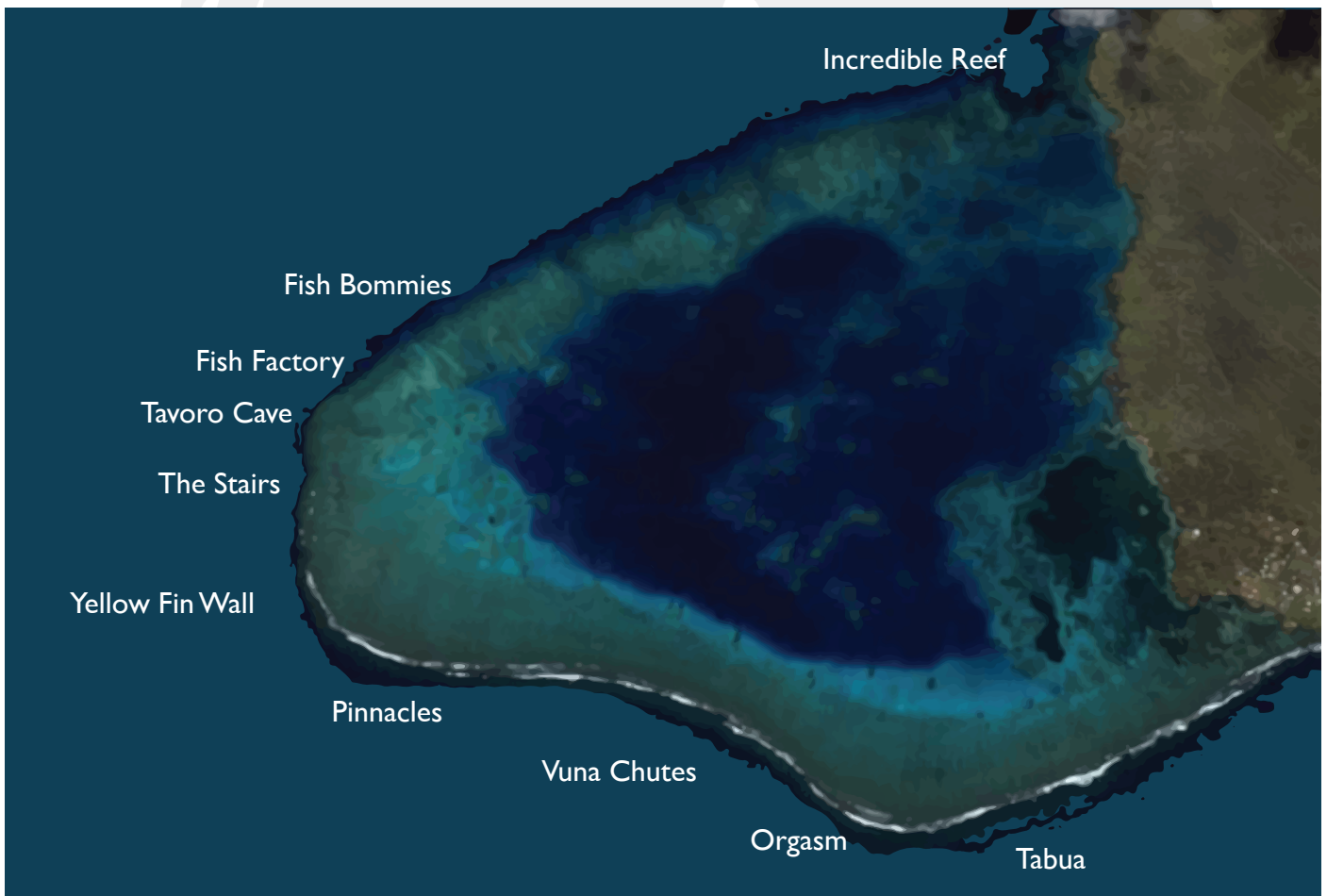
**Talk to our friendly & experienced Dive Crew for further information on diving in Paradise!**



## Dive Maps



**Legendary Rainbow Reef and the famous 'White Wall' dive site is scenic a 50 minute boat ride from Paradise Taveuni Resort.**



**The Southern Reefs of Taveuni, Vuna Reef is just 3 - 5 minute boat trip from Paradise Taveuni Resort.**



## **PARADISE DIVER REVIEWS**

### **Read what some of our Divers have to say:**

“I passed the 500 dive mark this trip and everyone seemed as excited for me as I was. Every time I came up from a dive I was asked, or reminded of what number I was on (and not just by the dive staff I might add but the resort staff as well!). After I completed dive 500, a shore dive with one of the staff, the rest of the dive staff was on the jetty to cheer. At dinner I was presented with a laminated certificate commemorating dive 500 and champagne! My husband wants to go back for his 500th dive (he is on 487)! Hats off to all the folks in the dive shop.”

*John & Sandra Quick, USA*

“Thank you all very much for the wonderful time in Paradise. The food and service have been wonderful. The staff go out of their way to attend to all your needs, especially in the evening when they play music and sing. The staff share their Fijian culture with us. The dive staff have been wonderful making sure our equipment is on the boat or ready for a shore dive. Once again a job well done. The Bures are great and also make you feel like you are in Paradise.”

*Lucy, Steve & Cindy Lashta, Canada*

“BULA! What a perfect name – PARADISE. It truly is a wonderful place. I have never been to a place that made me feel so welcome and loved. We have made so many wonderful new friends. This was my first dive experience and I was a little nervous. But the dive staff made it very easy to overcome my fears. CHARLIE was so wonderful. I will never forget this trip and I cry every time I think about going home. Terri & Allan thank you for a very memorable vacation I will never forget. VINAKA! VINAKA! VINAKA!”

*Una Janacre, Canada*

“Our trip to Paradise was Paradise – WANANAVU! The staff are friendly, accommodating, fun, kind, helpful funny & perfect. We enjoyed in getting to know them & seeing them every day. The diving staff was also wonderful! The diving was amazing & and everybody made it fun & enjoyable. The grounds are well kept & gorgeous & our bure & all the buildings. The only thing we could change about this trip is that we could stay longer!! We hope to see you all again soon! Thank you for making our trip so special & memorable.”

*Hailey & Steve Sedecor, USA*

